

HEGRO Evo 2024



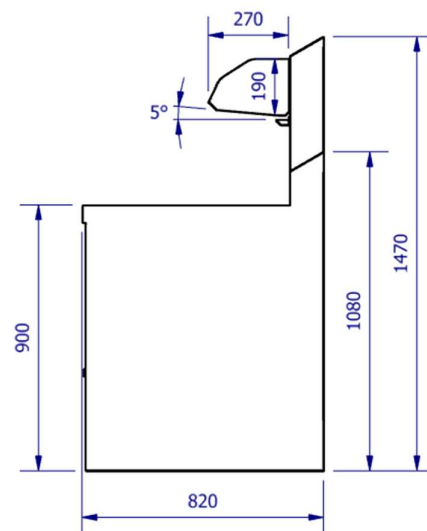
HEGRO Evo 2024

- At Hegro, we will continue to work with an initial module and modules for the lay-out. An Evo consists of 1 to 3 modules with a length of up to 1710mm.
1. The pans must all be gas OR all electric. It is not possible to interfere with this. The additives (ABM/Griddle/Chipbox) are always electric and can be added as a module at any time.

Basis:

 Multi-unit width : **Initial module + Module width** (summed)

	Width	Depth	Working height	Height
Initial Module Low	90	820	900	1080
Initial Module High with Receptacle				1470


Modules:

Gas HE		Width		Size	Nom. Load	Content	Material
		Solo-unit	Module Multi				
R	Round 44	630	540	Ø440	29,8 kW	± 36 L	5mm, steel
2	2-basket	630	540	380x540	29,4 kW	± 27,5 L	4mm bottom, 3mm sides, steel
3	3-basket	750	1080	580x540	30,6 kW	± 42,5 L	4mm bodem, 3mm zijanten, staal
V	Flat	630	540	420x470	21,7 kW	± 25,3 L	4mm, steel
W	Flat Large	800	1080	680x470	26,7 kW	± 44 L	4mm, steel

Electric		Breedte		Size	Power		Content	Material
		Solo-unit	Mod. Multi		Standard	Heavy		
R	Round 45	630	540	Ø450	18 kW (400V)(min. 32A)	-	± 36 L	3mm, ss
2	2-basket	630	540	400x440	12 kW (400V)(min. 20A)	17 kW (400V)(min. 32A)	± 32 L	3mm, ss
3	3-basket	750	1080	600x440	18 kW (400V)(min. 32A)	25,5 kW (400V)(min. 40A)	± 45 L	3mm, ss
V	Flat	630	540	400x440	12 kW (400V)(min. 20A)	17 kW (400V)(min. 32A)	± 32 L	3mm, ss
W	Flat Large	750	1080	600x440	18 kW (400V)(min. 32A)	25,5 kW (400V)(min. 40A)	± 45 L	3mm, ss

Additions		Width		Size	Power connection	Material
		Solo-unit	Module Multi			
A	Bain Marie	630	540	3x 1/3 GN	230 V, 2 kW	SS, pot 200mm deep
B	Griddle			470x500	230 V, 2x 3 kW	15mm Chrome-plated steel
C	Chipbox			420x515	230 V, 2 kW	SS

Properties:

1. Appearance:
 1. Fixed sheet metal parts
 2. Stools and knobs visible on the outside
 3. Grease drawer accessible at the front
 4. Controls at the bottom of the oven
 5. Grease deposits and leaks in the substructure can only come to the user due to the design, so that there is an earlier view of possible problems and less grease under and behind the baking wall
1. Superstructure (for high model)
 1. Full-length receptacle with a depth of 270mm and a height of 190mm
 2. The receptacle has been moved backwards at an angle of 5° so that the fumes from the fryer can be better extracted by an extractor hood
 3. Due to the angled receptacle, condensing water vapour will roll to the rear. At this back there is a drip tray where the grease from the receptacle will also collect. The drip tray can be removed for cleaning
2. Optional: Filtration system:
 1. The same grease drawer with or without filter system
 2. 1 filter net with drawer
 3. With a filter system, there is always a return line available. In addition, it can be pumped out to a bucket through the front OR pumped out backwards the furnace onto a piping system
 4. Due to the universal structure of the filter system, it could be possible to choose to add a filter system to an existing Evo of this type in the future
3. Service:
 1. Only wiring in the substructure
 2. Behind the intermediate plate under the screen is all the control of an Evo. As a result, a large part of the problems can be solved by removing 1 plate. Even with an electric Evo
 3. Plates on the front can be removed with a few screws
 4. Suspension for faceplate after removal
 5. With 3 modules, removable posts are available if a boiler needs to be replaced. The posts can be removed without sharpening
 6. Stiffer construction with rounded bottoms for tiled floors and adapted for trolleys during installation
 7. The pump system can be removed within 10 minutes and replaced within 15 minutes

HEGRO Evo 2024

Attachment:

First product images (also available in full quality):



HEGRO Evo 2024



Figure 1 Rear high and low model



Figuur 2 Vergelijking hoog en laag model

HEGRO Evo 2024



Figure 3 Tall model with container and drip tray

HEGRO Evo 2024



Figure 4 Filter tray with weight indication on the inside

HEGRO Evo 2024



Figure 5 Low model with filtration system with road pump to front bucket

HEGRO Evo 2024



Figure 6 Low model in electric version

HEGRO Evo 2024



Figure 7 Inside for service and maintenance of low model with filtration system with road pump to bucket at the front

HEGRO Evo 2024

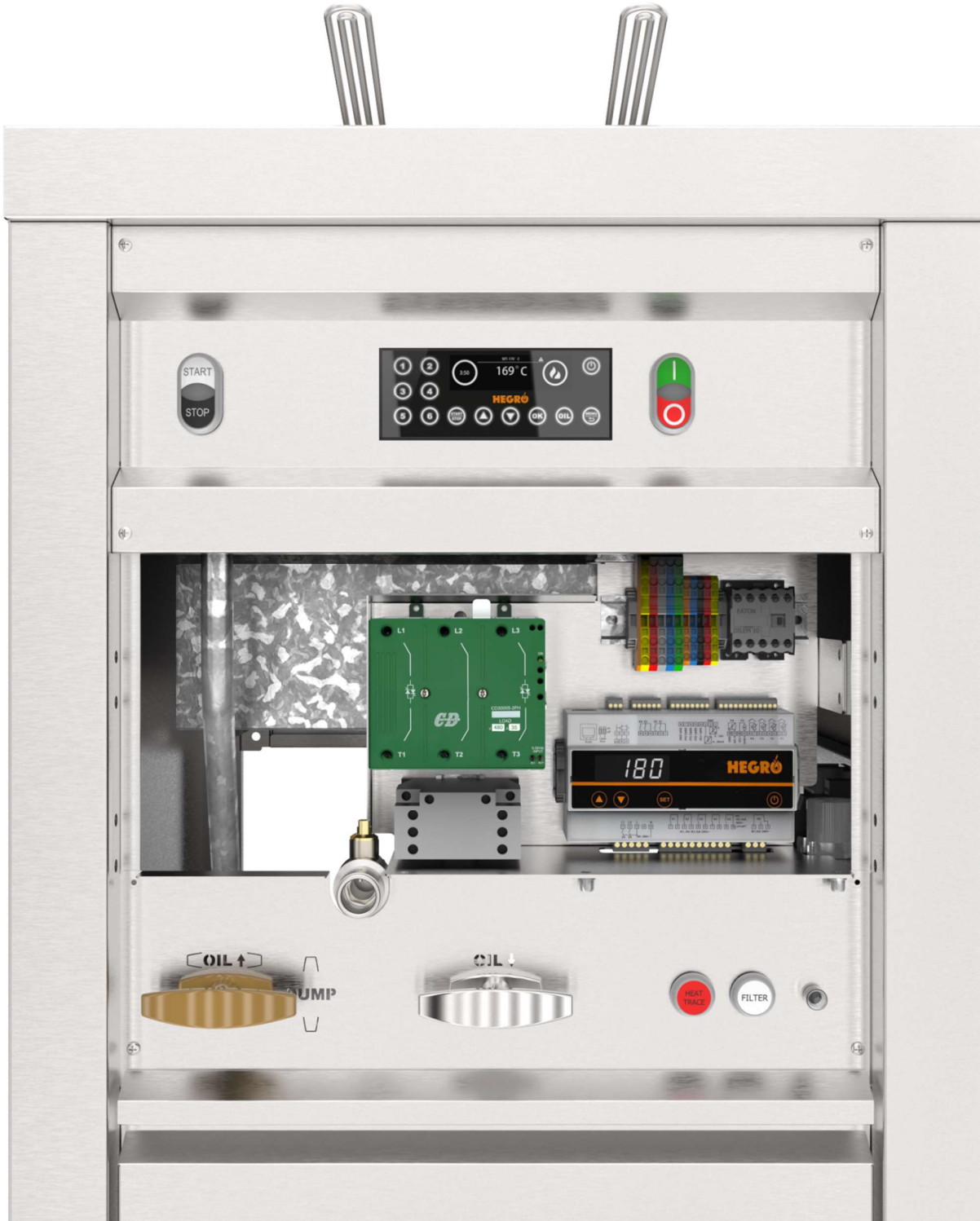


Figure 8 Inside for service and maintenance of an electric low model with filtration system with road pump to bucket at the front

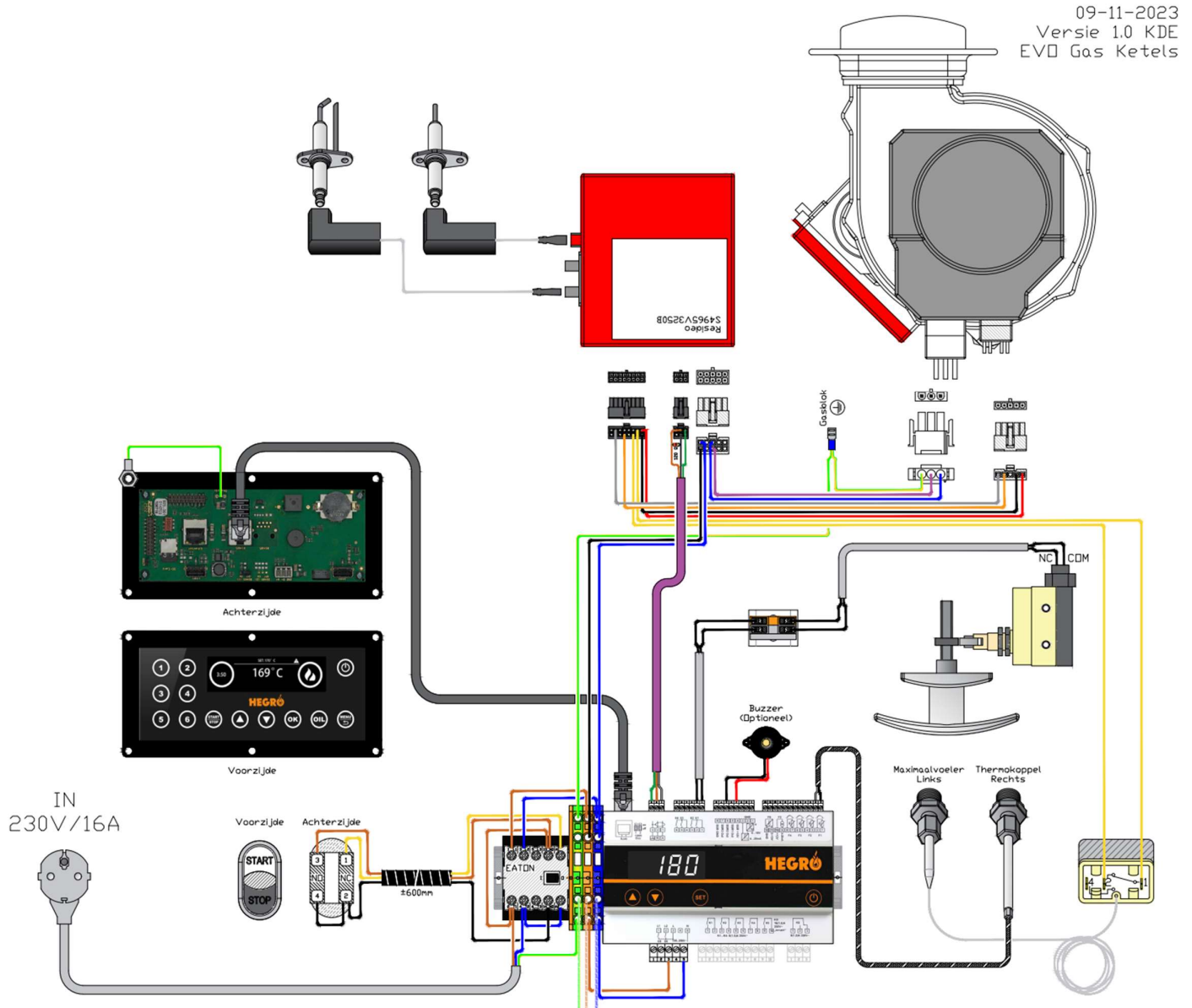


Figure 9 Interior and accessibility of filtration system

HEGRO Evo 2024

Appendix 2:

Electrical wiring diagram, Gas (Also available in full quality):



Appendix 3:

Electric wiring diagram, Electric (also available in full quality):

Schema WEL voor:

- Ø45 = 17 kW
- 2m 2x 8,5kW = 17 kW
- 3m, 3x 6kW = 18 kW

Schema NIET voor:

- 2m 2x 6kW = 12 kW
- 3m, 3x 8,5kW = 25,5 kW

06-12-2023
 Versie 1.0 KDE
 EVO Elektrische Ketels

