

## DOMINATOR**PLUS**

# E3196 6 Zone Ceramic Glass Top Range

### Key features

- 6 x 230mm square heat zones
  - excellent heat transfer for fast heat up times
  - suitable for multi-pot cooking
- 6mm thick strengthened ceramic glass hob
  - Sturdy enough to withstand robust pan-work
  - Easy to keep clean as spills simply wipe clean
  - No raised hotplates so less chance of spills
- Visual display on glass alerts user when surface is hot
  - Minimises risk of burns
- 2/1 compatible fan-assisted oven
  - Even heating across the entire oven chamber
- Vitreous enamelled oven chamber
  - Easy to clean and to keep clean
- Wide oven temperature range of 100 - 250°C
  - Ideal to prepare a wide variety of food
- Twin oven doors with individual catches
  - Retains heat within the oven chamber
- Oven has 5 shelf positions and allows 2 shelf cooking
  - Versatile, ideal for a wide range of menu items
- Low profile door handles
  - Reduces intrusion into work space

### Accessories

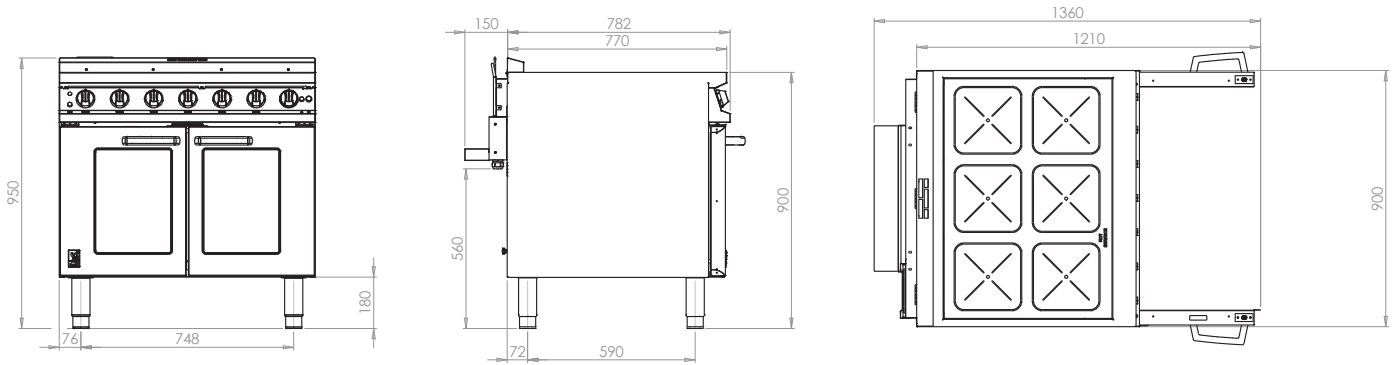
- Oven shelf
- Factory fitted, adjustable castors
- Fixed installation kit

### Similar Models

- E3101 OTC 6HP fan-assisted oven range
- E3101 OTC 3HP fan-assisted oven range
- E3101P OTC 4HP fan-assisted oven range



# Ceramic Glass Top Oven Range



Unit on castors is the same hob height

Measurements *in mm*

## Specification *details*

Electrical rating (kW)	20.2
Electrical supply voltage	400V 3N~
Minimum electrical supply 400V 3N~ (A)	32
Electrical current split (A)	L1: 30; L2: 30; L3: 30
Zone rating (kW)	2.3 x 6
Total oven element rating (kW)	6.4
Zone size (w x h - mm)	230 x 230
Oven dimensions (w x d x h - mm)	700 x 535 x 430
Oven shelf (w x d - mm)	700 x 535
Gastronorm compatibility	2/1
Weight (kg)	115
Packed weight (kg)	130
Packed dimensions (w x d x h - mm)	1000 x 1000 x 1100

## Installation notes

Adequate ventilation must be provided to supply sufficient fresh air and to allow easy removal of any such products that may present a risk to health. Please consult current legislation for details that relate to specific locations.

Install unit on a level, fireproof surface in a well-lit position. If floor is made of a combustible material, local fire requirements must be checked to ensure compliance.

A clearance of 150mm should be observed between appliance and any combustible wall.

